

# FOR SALE OFFICE BUILDING INVESTMENT LAKELAND, FLORIDA



**1525 S. Florida Ave., Lakeland. Florida 33803**

**7,030 SQ. FT. Office User-Investment Property!**

Currently divided into 4 office suites with 2 existing tenants.

**LOCATED IN DIXIELAND-BEACON HILLS-LAKE HOLLINSWORTH AREA**

**JUST SOUTH OF DOWNTOWN LAKELAND**

**FRONTS BUSY SOUTH FLORIDA AVE. 30,500 AADT**

**Buyer-user space up to 4,000 sq. ft. is available.**

**SALES PRICE: REDUCED: \$999,900**

*Call For Details and Investment Package*

**STEINBAUER ASSOCIATES, INC. REALTOR**

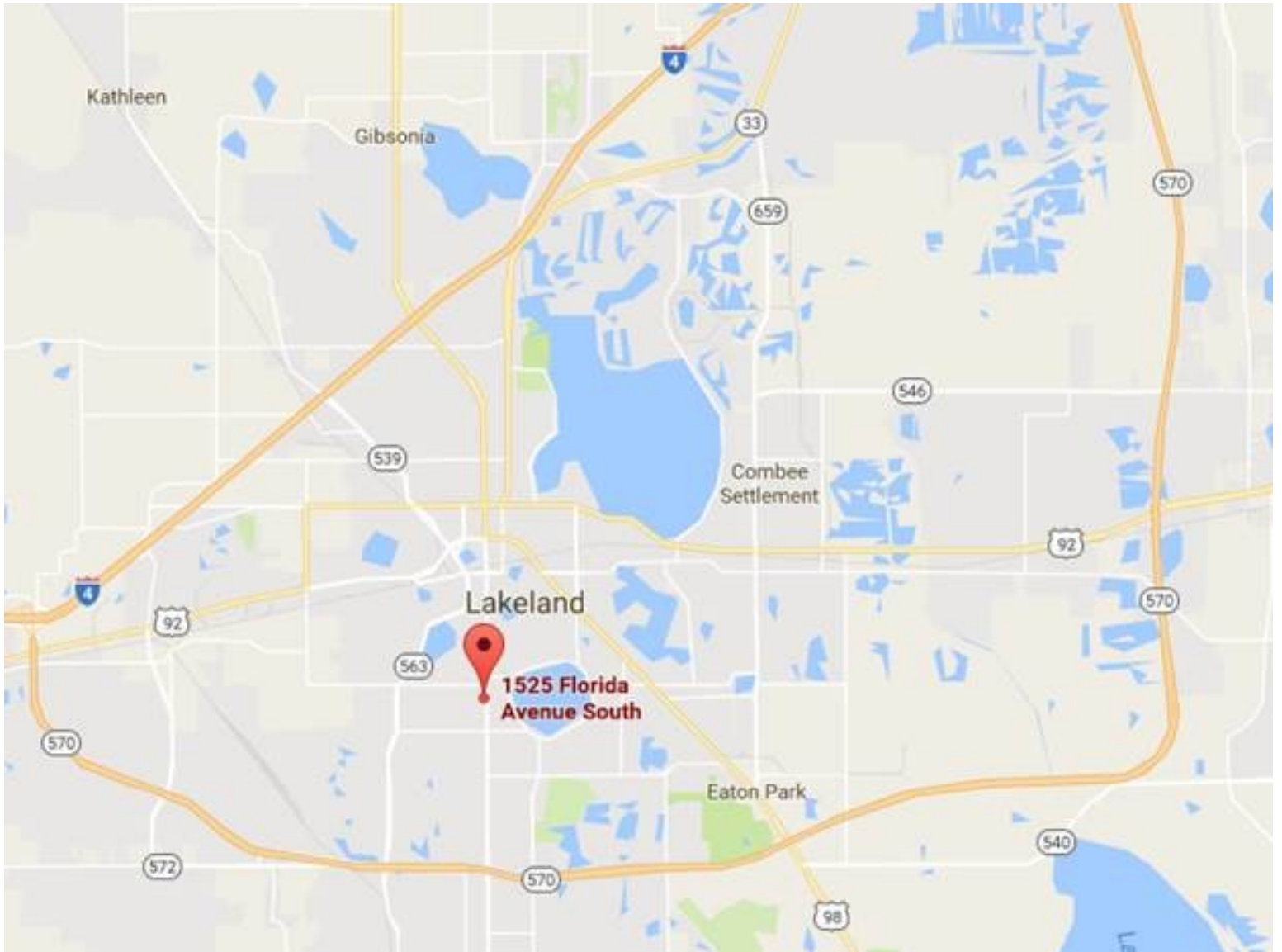
**COMMERCIAL - INDUSTRIAL - INVESTMENT: SALES, LEASING**

**AND PROPERTY MANAGEMENT**

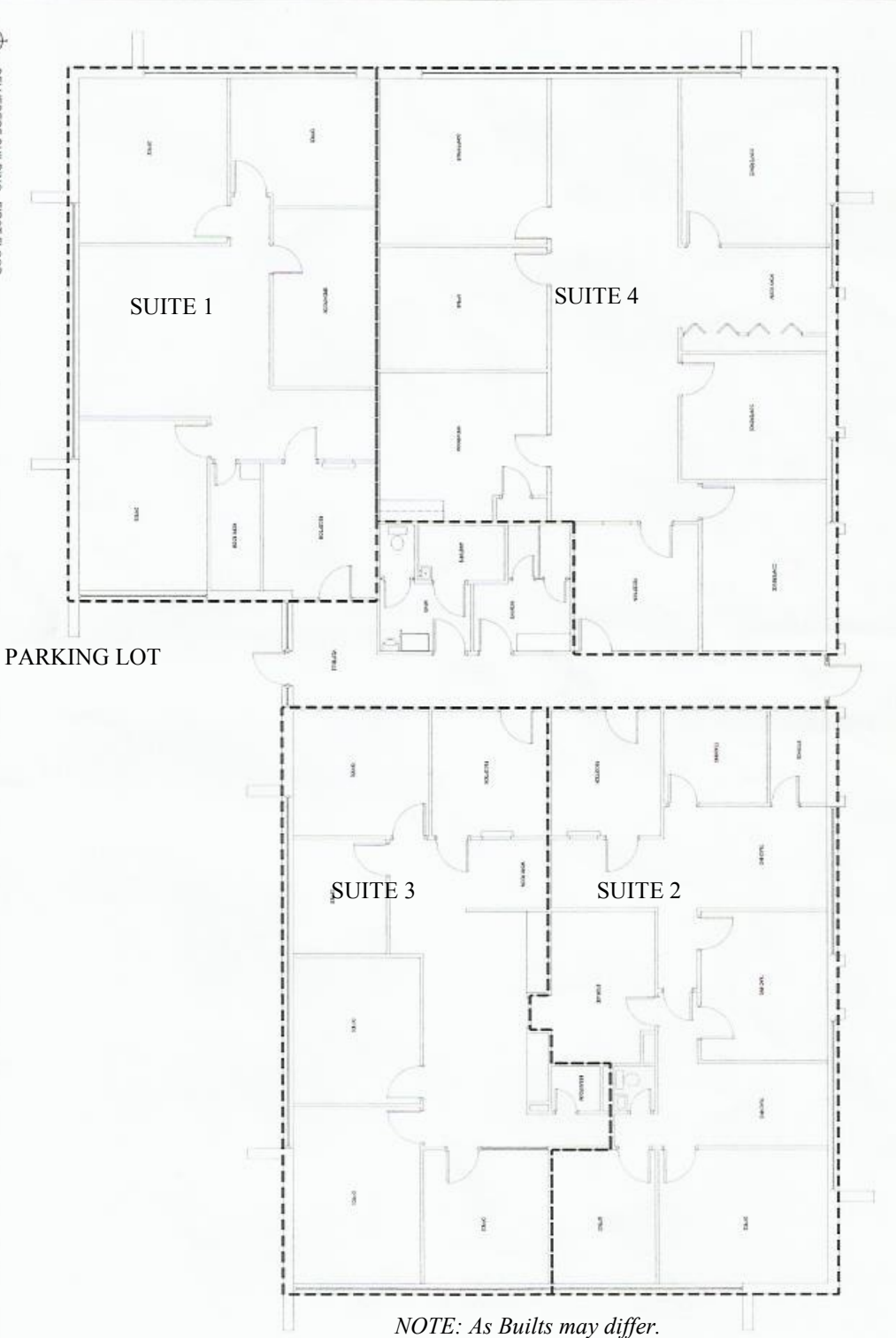
**(863) 647-1661 LAKELAND, FLORIDA**

NOTE: EVERY EFFORT HAS BEEN MADE TO PROVIDE ACCURATE INFORMATION. HOWEVER WE ARE NOT RESPONSIBLE FOR ERRORS, OMISSIONS, PRIOR SALE, CHANGE OF PRICE OR WITHDRAWAL FROM MARKET WITHOUT NOTICE. BUYER INDEPENDENT OF BROKER OR OWNER SHALL VERIFY ALL PERTINENT DATA.

# MAP



BELVEDERE BUILDING - FIRST FLOOR  
11/21/2019



NOTE: As Builts may differ.

**STEINBAUER ASSOCIATES, INC. REALTOR**

**863-647-1661**

S  
O  
U  
T  
H  
  
F  
L  
O  
R  
I  
D  
A  
  
A  
V  
E